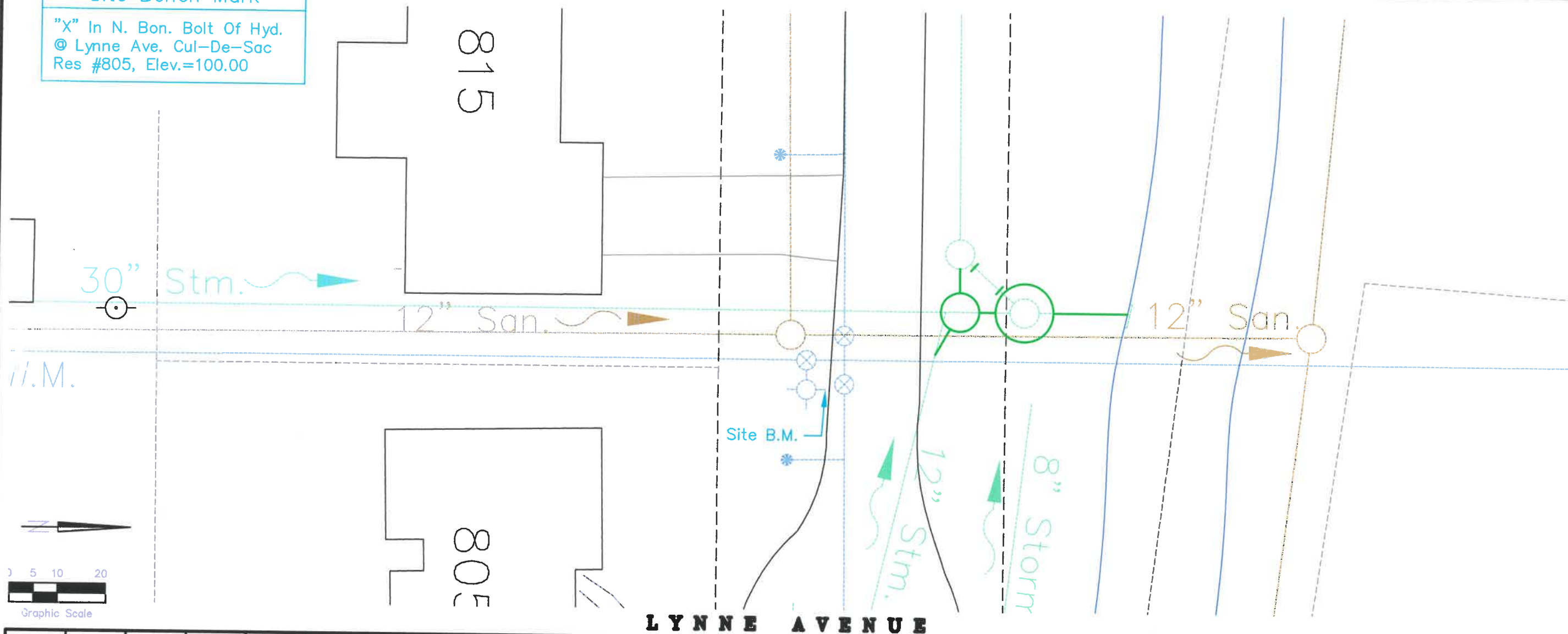


Site Bench Mark

"X" In N. Bon. Bolt Of Hyd.  
 @ Lynne Ave. Cul-De-Sac  
 Res #805, Elev.=100.00



LYNNE AVENUE

Prop. Top Of Curb Elev.	Prop. C. Elev.	Prop. Top Of Curb Elev.
100.00		100.00
095.00		095.00
090.00		090.00
085.00		085.00
Exlet Elev.		Exlet Elev.

Exist. Storm M.H. (To Be Removed)  
 Rim = 98.86  
 Inv. 15" W = 90.70  
 Inv. 15" N.W = 90.70 (Plug)

Exist. Storm M.H. (To Be Removed)  
 Rim = 98.95  
 Inv. 15" S.E. = 90.95 (Plug)  
 Inv. 30" N & S = 98.70 (To Be Removed)

Prop. 48" Dia. Storm M.H.  
 Rim = 98.86  
 Inv. 12" E = 89.45  
 Inv. 15" W = 90.74  
 Inv. 30" S = 88.71  
 Inv. 30" N = 88.71 (w/Duck 98)

Prop. 60" Dia. Storm M.H.  
 Rim = 98.95  
 Inv. 30" N = 89.70  
 Inv. 30" N = 87.20

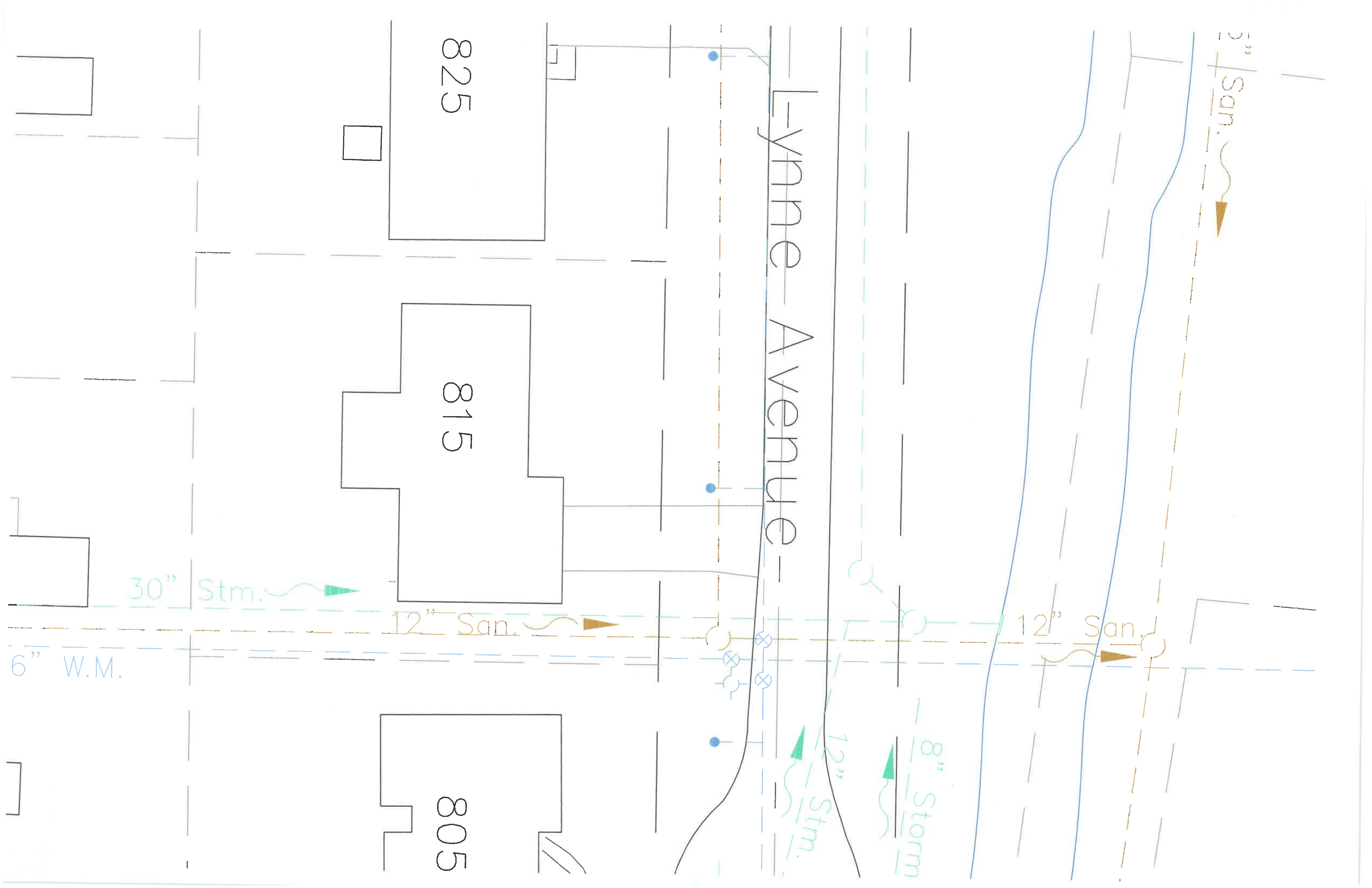
City of Napoleon Engineering Department  
 255 W. Riverview Ave., P.O. Box 151  
 Napoleon, Ohio 43545  
 Phone: (419) 592-4010  
 Fax: (419) 599-8393

Plans Prepared By  
 City of Napoleon Engineering Department  
 Joseph R. Kleiner, P.E.  
 City Engineer

City of Napoleon Engineering Department  
 255 W. Riverview Ave., P.O. Box 151  
 Napoleon, Ohio 43545  
 Phone: (419) 592-4010  
 Fax: (419) 599-8393

6/9/05 Plotted: 7/26/06 Scaled: 21.828  
 Drawn: Mark B. Spless Approved: Joseph R. Kleiner  
 Drawing Name: Lynne 815.dwg

Sheet 00 Of 00



Lynne Avenue

825

815

805

2" San.

30" Stm.

12" San.

12" San.

6" W.M.

12" Stm.

8" Storm